

Community and Industry  
Living Safely with Chemicals



# Brazoria County:

## Where Industry Works



# About BCPC

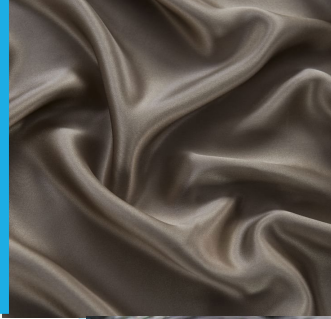
- **~30 member companies** working together to ensure sustainable growth for the petrochemical industry and the Brazoria County Community
- **Produce 1000s** of raw materials and intermediate products produced in Brazoria County supplying the global economy.
- **Dedicated** to ensuring safety, fostering economic growth, enhancing environmental sustainability, and promoting a positive quality of life for all.

# Member Companies





# Enhancing your everyday life



# Organization Structure





# Career Signing Day

- 7<sup>th</sup> annual Career Signing Day  
252 applicants (new record).
- 18 high schools.
- Nearly 1,000 interviews  
conducted by 42 Brazoria County  
companies.
- More than 300 students signed  
into full-time industry careers  
since the inception of Career  
Signing Day.



# Investing in the community

- 35,000+ hours spent volunteering by employees.
- \$1 million dollars to Brazosport College for its Welding Lab.
- \$200,000+ to Brazoria County for a recycled plastic playground for Jetty Park.
- Annual International Women's Day Celebration.



# Environmental, Health & Safety

- Best practice sharing seminars held with owner and contract companies.
  - Stop the Drop
  - Heat Stress
  - Safety in Technology
  - Human Performance



Dropped object simulation with a watermelon dropping from a scaffold structure.



# Economic Impact Report

- Conducted by Impact Datasource, LLC, an independent economic research firm in Austin, TX.
- Used publicly available information and industry standard economic modeling tools.
- Provides transparent, data-driven resource that quantifies the petrochemical industry's economic impact on Brazoria County.

# Adding Value to Brazoria County

- Annual Spending: \$24 billion
- \$9.1 billion of value added to Brazoria County's economy annually.
- \$390 million in property taxes contributed by the petrochemical industry. Without this contribution, property tax rates would need to rise by 16% to maintain the current level of services.





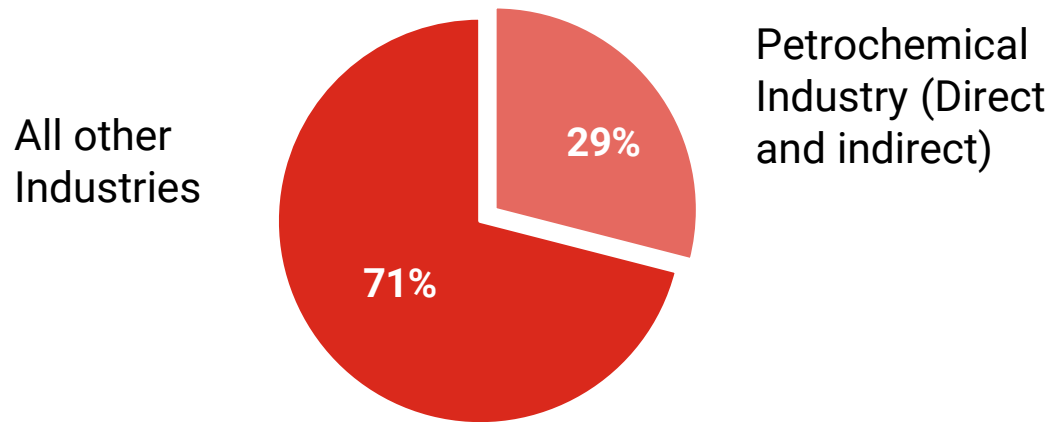
# Providing Jobs in Brazoria County

- 12,259 direct jobs in the petrochemical industry
- 39,955 indirect jobs generated by the industry's activities
- 75% of employees live in Brazoria County



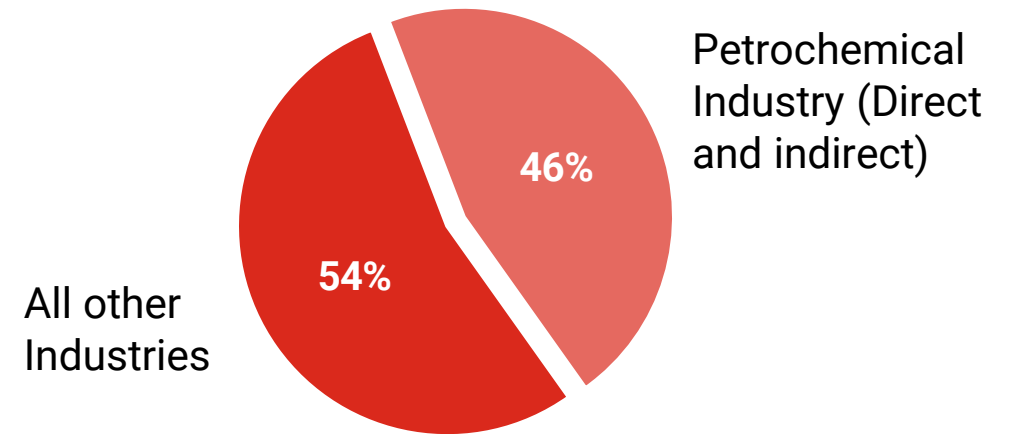
# The Industry's Contribution to County Employment and Wages

## COUNTYWIDE EMPLOYMENT



Every job in the industry creates **2.85** jobs in the local economy

## COUNTYWIDE WAGES



Average salary  
**\$143,182**



# Looking ahead

- Continued collaboration with industry partners
- Sustained economic benefits for the community
- Strengthened relationships with local organizations



# Connect with us

